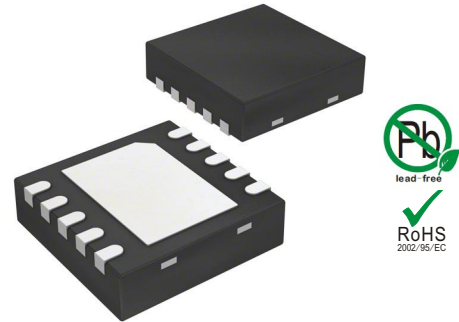


Features

- 400Watts peak pulse power ($t_p = 8/20\mu s$)
- Solid-state silicon-avalanche technology
- Low clamping voltage
- Low leakage current
- Low capacitance ($C_j = 3pF$ typ. I/O to I/O)



DFN2626

IEC COMPATIBILITY (EN61000-4)

- IEC 61000-4-2 $\pm 15kV$ contact $\pm 25kV$ air
- IEC 61000-4-4 (EFT) 40A (5/50ns)
- IEC 61000-4-5 (Lightning) 26A (8/20 μs)

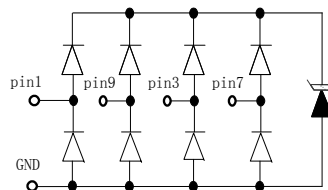
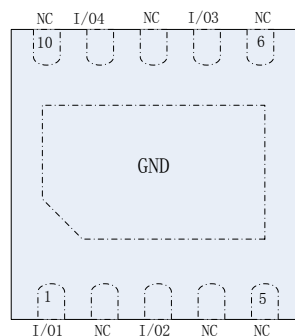
Applications

- USB 2.0
- 10/100/1000 Ethernet
- DVI
- T1/E1 Secondary Protection
- T3/E3 Secondary Protection
- Analog Video

Mechanical Characteristics

- DFN2626 package
- Molding compound flammability rating: UL 94V-0
- Packaging: Tape and Reel
- RoHS/WEEE Compliant

Schematic & PIN Configuration



Absolute Maximum Rating

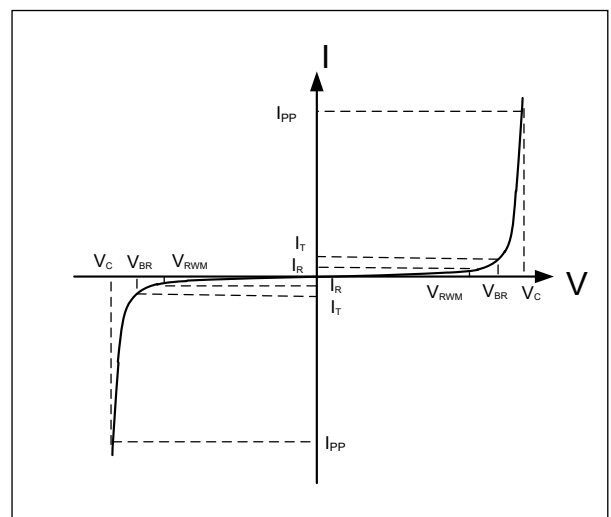
Rating	Symbol	Value	Units
Peak Pulse Power ($t_p = 8/20\mu s$)	P_{PP}	400	Watts
Peak Pulse Current ($t_p = 8/20\mu s$) (note1)	I_{pp}	26	A
ESD per IEC 61000-4-2 (Air) ESD per IEC 61000-4-2 (Contact)	V_{ESD}	25 15	kV
Lead Soldering Temperature	T_L	260(10seconds)	$^{\circ}C$
Junction Temperature	T_J	-55 to + 125	$^{\circ}C$
Storage Temperature	T_{stg}	-55 to + 125	$^{\circ}C$

Electrical Characteristics

Parameter	Symbol	Conditions	Min	Typical	Max	Units
Reverse Stand-Off Voltage	V_{RWM}				3.3	V
Reverse Breakdown Voltage	V_{BR}	$I_T = 1mA$	4			V
Reverse Leakage Current	I_R	$V_{RWM} = 3.3V, T = 25^{\circ}C$		0.2	0.5	μA
Peak Pulse Current	I_{PP}	$t_p = 8/20\mu s$			26.0	A
Clamping Voltage	V_C	$I_{PP} = 26.0A, t_p = 8/20\mu s$		17		V
Junction Capacitance	C_j	$V_R = 0V, f = 1MHz$ I/O to I/O		2.8		pF
		$V_R = 0V, f = 1MHz$ I/O to GND		5.5		pF

Electrical Parameters (TA = 25°C unless otherwise noted)

Symbol	Parameter
I_{PP}	Maximum Reverse Peak Pulse Current
V_C	Clamping Voltage @ I_{PP}
V_{RWM}	Working Peak Reverse Voltage
I_R	Maximum Reverse Leakage Current @ V_{RWM}
V_{BR}	Breakdown Voltage @ I_T
I_T	Test Current



Note: 8/20 μs pulse waveform.

Typical Characteristics

Figure 1: Peak Pulse Power vs. Pulse Time

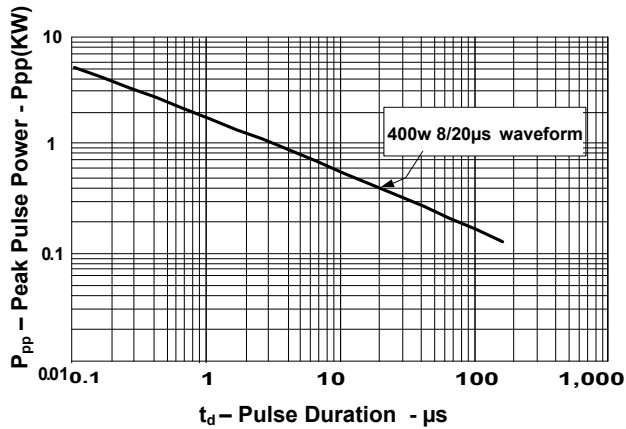


Figure 2: Power Derating Curve

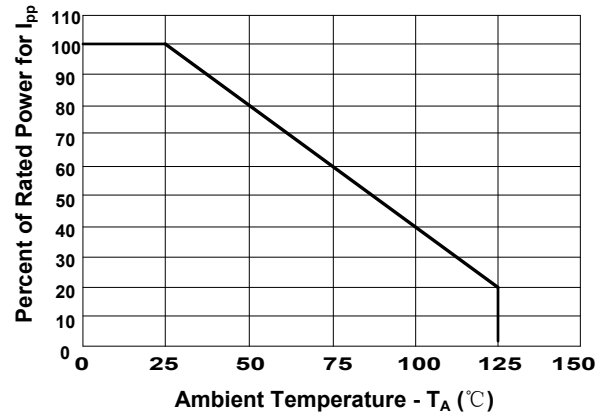


Figure3: Pulse Waveform

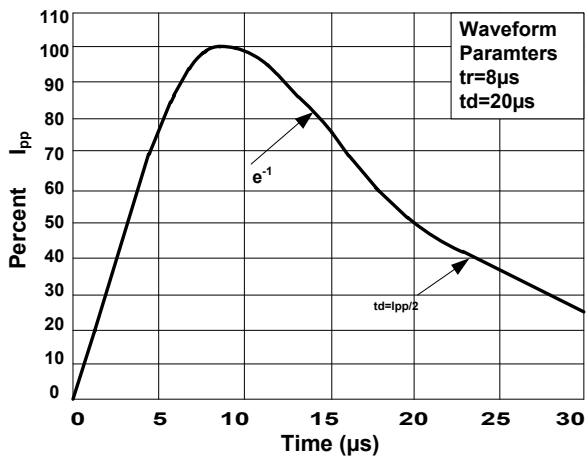
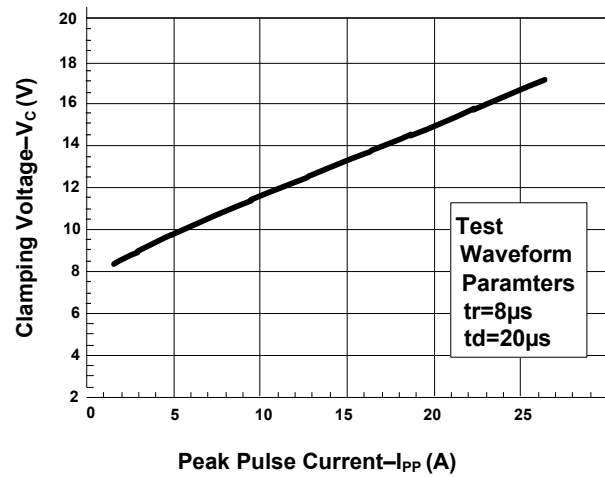
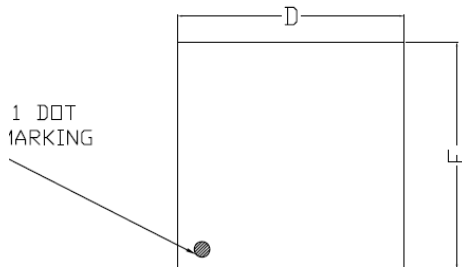


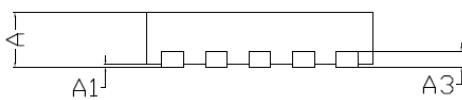
Figure 4: Clamping Voltage vs. Ipp



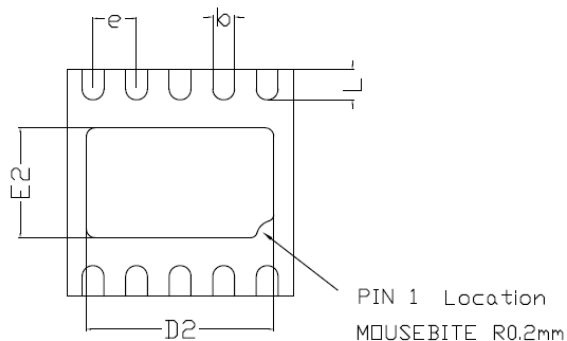
Outline Drawing



TOP VIEW



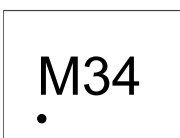
SIDE VIEW



BOTTOM VIEW

SYMBOL	MILLIMETERS		
	MIN.	MOM.	MAX.
A	0.500	0.550	0.600
A1	0.000		0.050
A3	0.150 REF.		
D	2.550	2.600	2.650
E	2.550	2.600	2.650
D2	2.000	2.150	2.250
E2	1.110	1.260	1.360
b	0.200	0.250	0.300
L	0.250	0.350	0.450
e	0.5 BSC		

Marking



Ordering information

Order code	Package	Base qty	Delivery mode
PTN2610L3M3C40	DFN2626	3K	Tape and reel