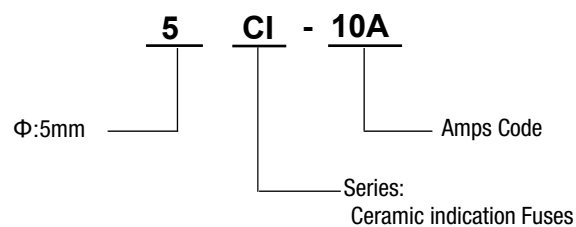




Description

- Rated Voltage: Below 264V at 50/60Hz
- Rated Current: 10A
- Operating Temperature Range: - 40°C to + 125°C
- Interrupting Rating : 25kA @ 264 VAC at 50/60Hz
- Compression spring force: 6.12N±0.5 Elastic
- coefficient: 2.04N/mm

Part Numbering System



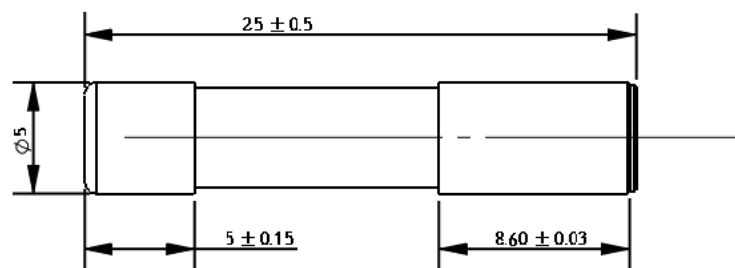
Functional Characteristics

Test Current	Opening Time	
	Min.	Max.
100%	3,600s	---
210%	---	1,800s
275%	0.75s	80s
400%	0.15s	5s
1000%	0.01s	0.15s

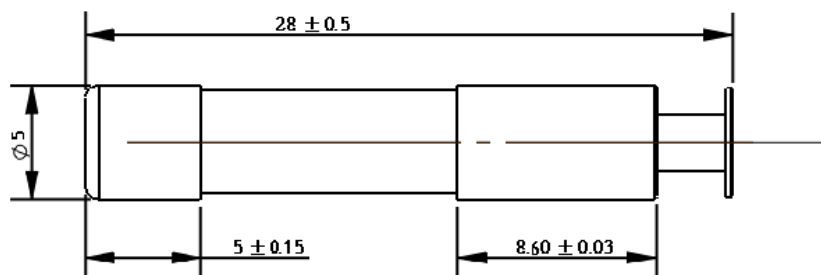
Specifications

Assembly P/N	Current Rating In(A)	Voltage Rating Un(V)	Typical Cold. Resistance (mOhms)	Typical Voltage Drop (mV)	Pre-arcing I ² t (A ² Sec)	Operating I ² t (A ² Sec)
5CI-10A	10	264	10max	150max	300min	350min

Product Dimension



Before fuse



After fusing

***Special statement:** the parameters provided in this product manual are the test results under standard conditions, only for customers as a type selection reference, if there is a difference between the actual conditions and standard conditions, please contact our technical staff. Our company reserves the right to update, change and modify the information in the data sheet without notice. The actual technical parameters of the product shall be subject to the technical specification formally provided when ordering.